

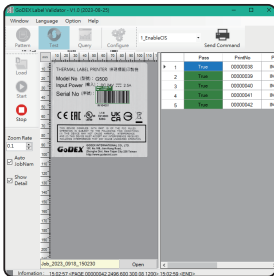


Printer Accessory

Barcode Verifier

Grade Your Barcode, Precision at Every Label

The verifier module can be adapted to ZX1200i+ and ZX1300i+ industrial printer, to become an integrated solution with the ability to print, scan and grade 1D and 2D barcodes conforming to ISO-15416 / ISO-15415 and generated visible report. The system can reads each barcode, identify failures, and user can choose to reprint, stop or skip the label. It helps the user to avoid of using non-conforming labels on production and saves time and money.



Model Name		Barcode Verifier
Media	Width	Max. 4.65" (118 mm)
	Thickness	Max. 0.01" (0.25 mm)
Software		Label Validator (Windows)
Barcode Verifier Specification	Scan Resolution	600 dpi
	Max. Scan Width	108 mm (4.25")
	Max. Verification Speed	203 dpi & 300 dpi: 101.6 mm/s (4 ips)
	Barcode Orientation	All directions
	Verification Standard	1-D Barcode verification conforming to ISO/IEC 15416-2016 2-D Barcode verification conforming to ISO/IEC 15415-2011
	Supported Barcodes	1-D : CodaBar, Code 128, Code 39, Code 93, EAN-128, EAN-13 (none Add 2/5), EAN-8 (none Add 2/5), Interleaved 2 of 5 (I 2 of 5), HIBC 39, ISBT 128, ITF-14, Logmars, MSI, RPS 128, UCC-128 (GS1-128), UPC-A, UPC-E, HIBC 128 2-D : QR Code, PDF417, Maxicode, GS1 DataBar, Aztec
	Reports	Verification report is available on web page file and SQLite (.db) database.
Installation		Dealer Install
* Specifications are subject to change without notice. All company and/or product names are trademarks and/or registered trademarks of their respective owners.		